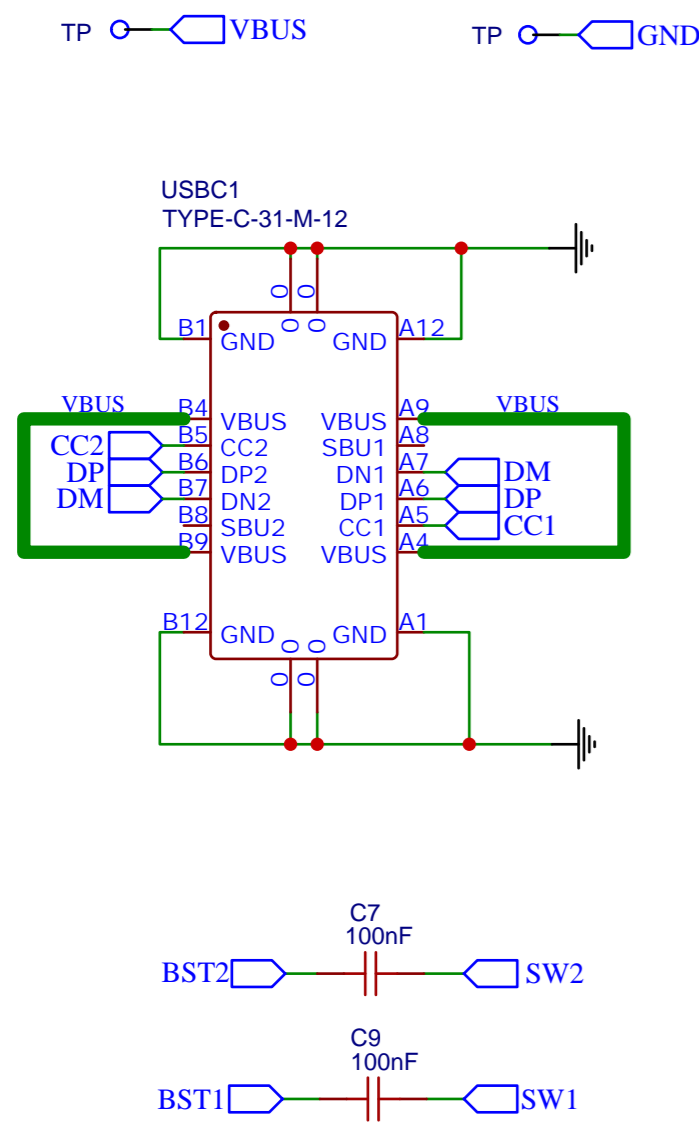
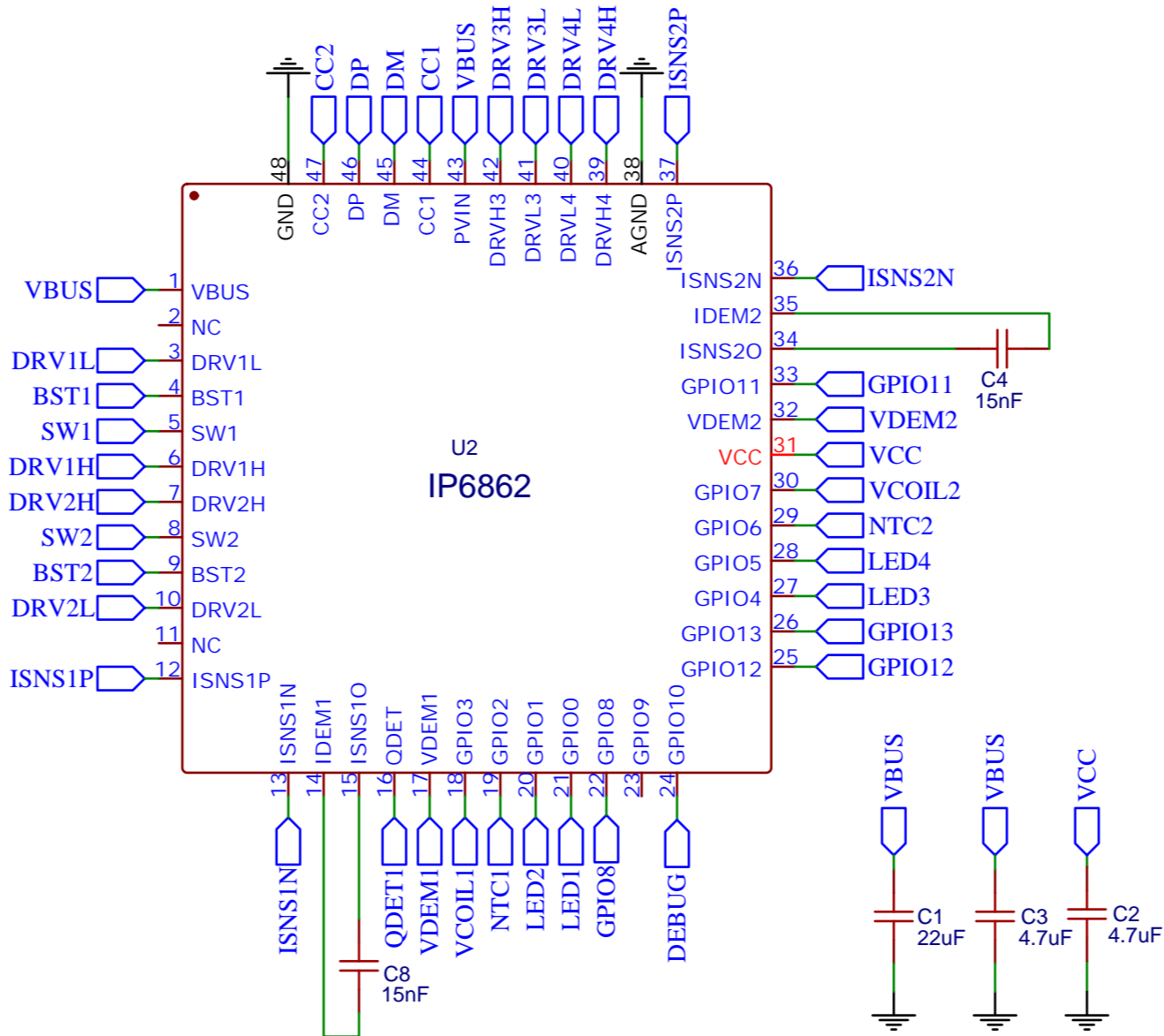


输入接口电路

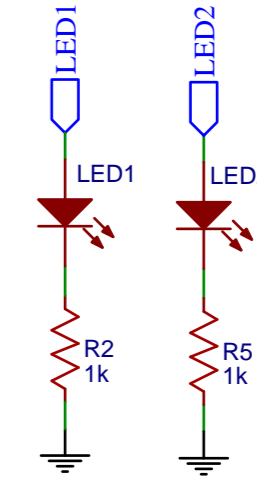


主控IC

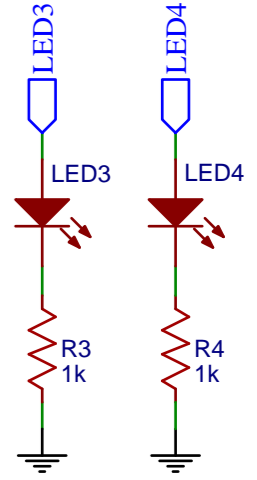


LED和NTC电路

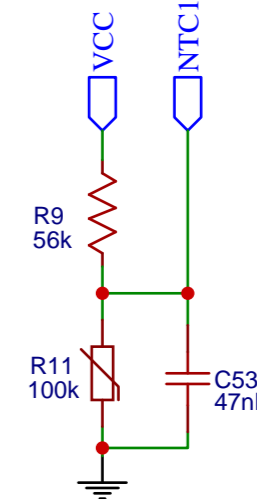
线圈1对应LED



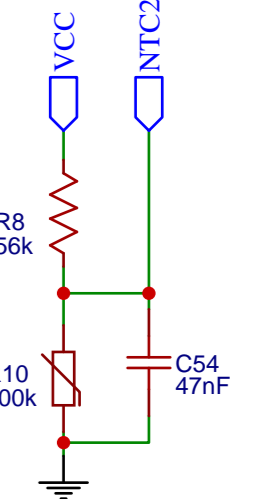
线圈2对应LED



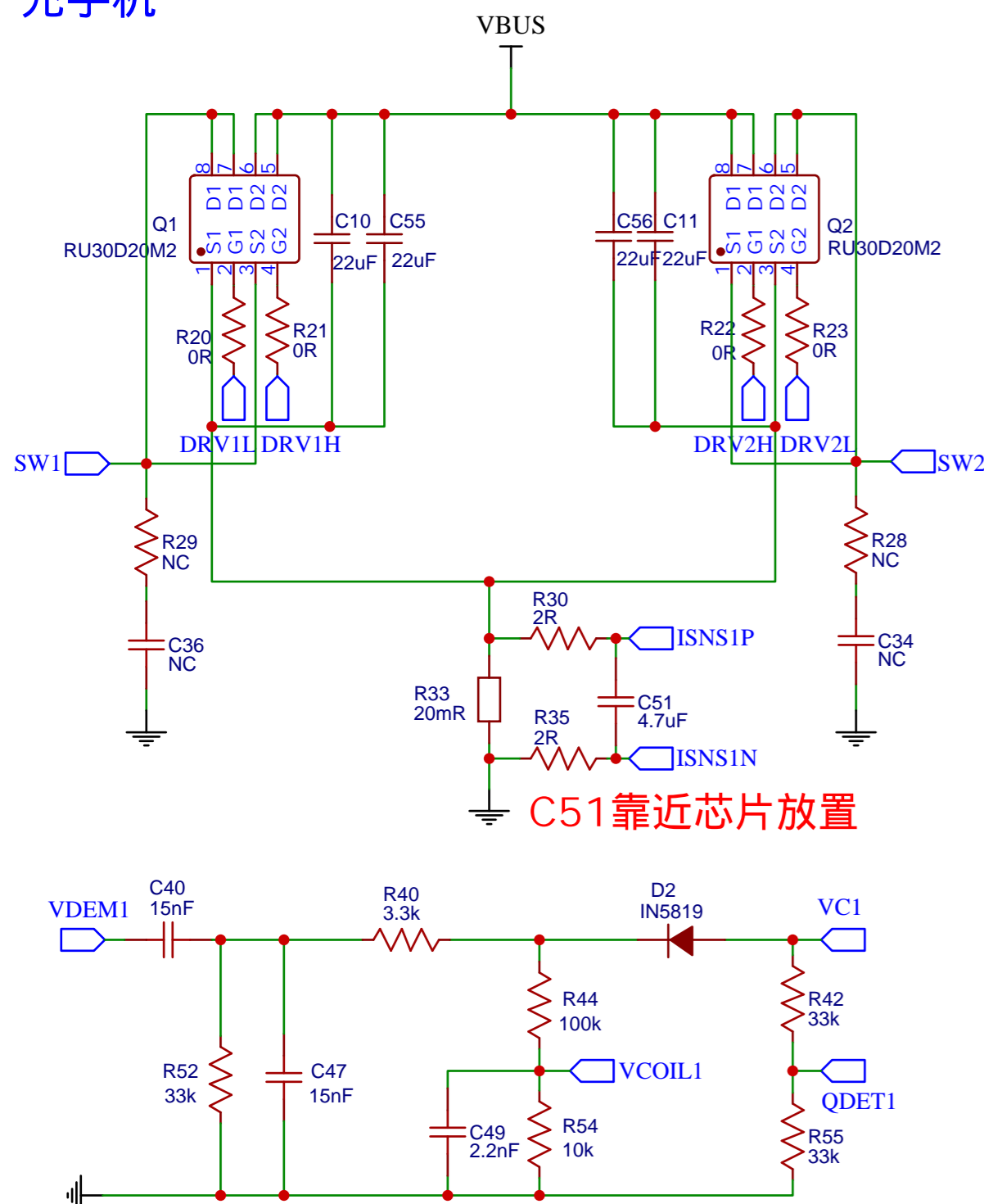
线圈1对应NTC



线圈2对应NTC

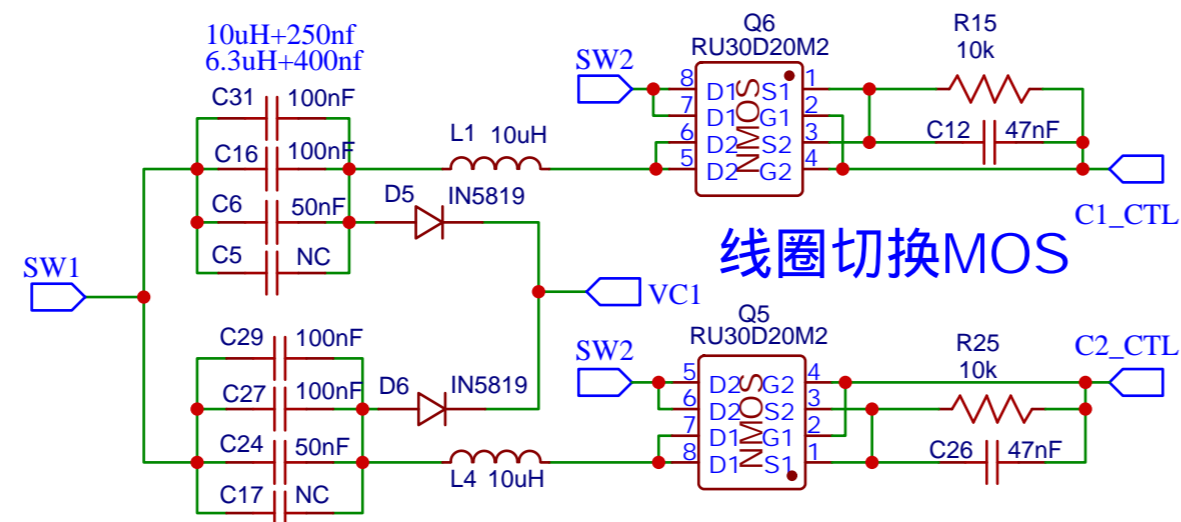


充手机



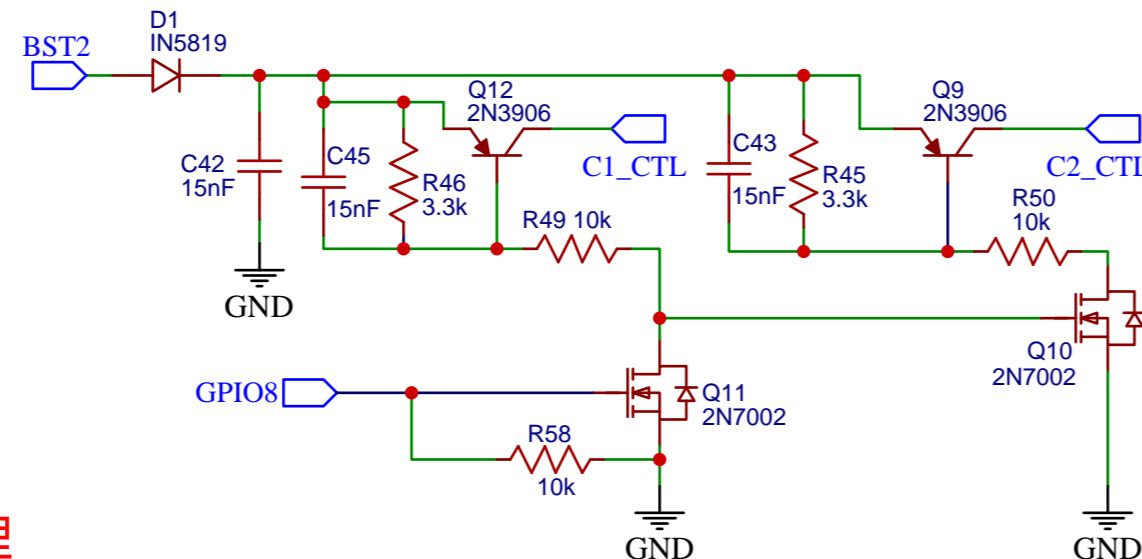
解调电路走线远离功率部分或包地处理

如果两路线圈只搭配一路电容
Q5和Q6需要选择40V耐压以上的MOS

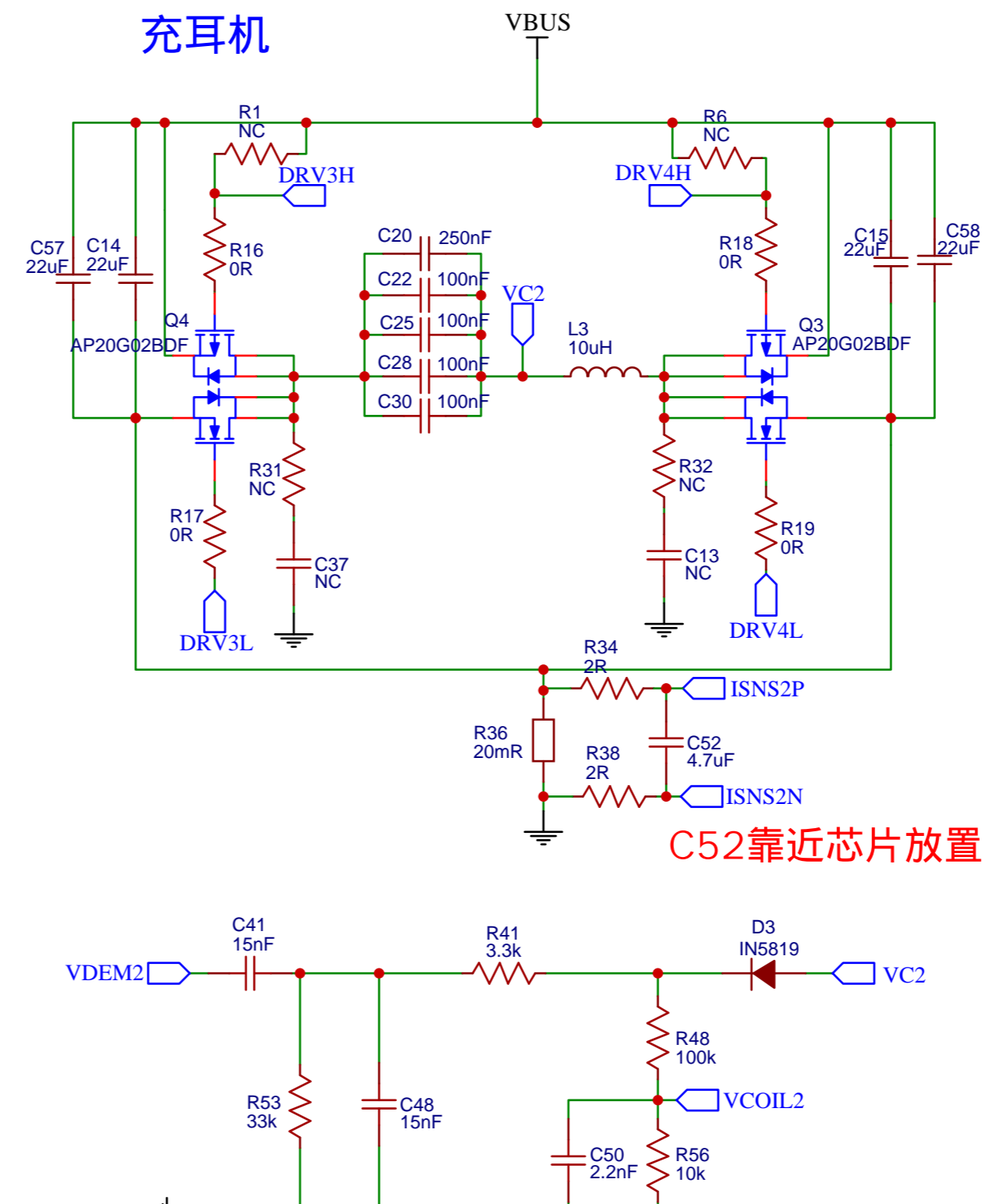


单线圈应用只需把Q5的D1和D2短接即可
线圈切换电路和线圈切换MOS都不需焊接
双线圈方案时，要求每路线圈单独接电容

线圈切换控制电路

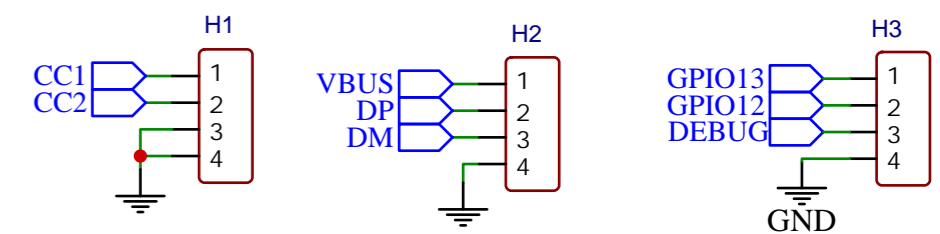


充耳机



解调电路走线远离功率部分或包地处理

DEBUG接口



v2.40更新记录：在v2.30的基础上

1、充耳机部分H桥驱动上拉电阻NC